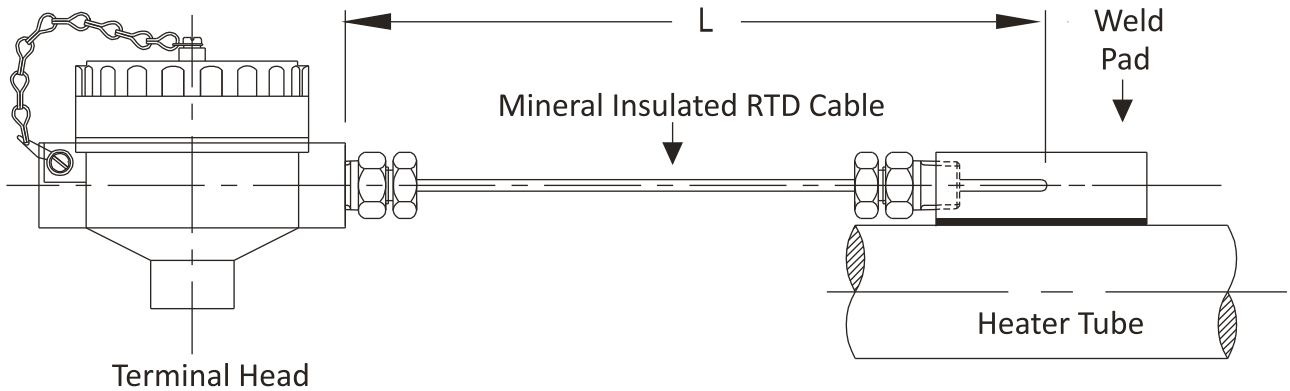


RTD ASSEMBLY WITH WELD PAD

RTD9



Special Features :

- ★ Mineral insulation.
- ★ Available in all sheath diameters
- ★ Mineral insulation enables flexibility and durability.
- ★ Enclosures in all material - Die cast Aluminium / Cast Iron / SS 304 / SS 316
- ★ Enclosures in all categories (Weatherproof, IP-65 to IP-68, Flameproof Gr. IIA IIB and Explosionproof, Gr. IIA, IIB, IIC for H₂ service application.)

Application :

tube or flat surface. Typical applications are measurement of surface temperature of refractory lined vessels, columns, reactors in Petrochemical plants & oil Refineries & pipelines.

Standard Product details :

No of element	Simplex
Element type	Pt - 100 RTD
Range	-200°C till 449°C
Accuracy	Class 'B' Tolerance as per IEC - 751
Wire Configuration	3 Wire System
Sheath Diameter	6.0 mm
Sheath Material	SS 316
Terminal Head Type	Screwed type, weatherproof, IP-65 in Die-cast Aluminium
No. Of Conduit Entry/Entries	One
Conduit Entry Size	3/4" ET(F)
Mounting Type	Bracket Mounting for Head
Weld Pad Size	25x25x50 mm
Weld Pad Radius	Flat Surface
Weld Pad Material	SS 316
Total Length "L" mm	3000 mm.
Option Description	S.C. cable gland in nickel plated brass

How to Order:

Code	No of Element
S	Simplex
D	Duplex

1

Code	Element Type
Pt - 100	Pt - 100 RTD
Pt - 500	Pt - 500 RTD
Pt - 1000	Pt - 1000 RTD
Cu - 53	Cu - 53

2

Code	Range
DST	-200°C till 449°C
NST	450°C till 600°C

3

Code	Accuracy
A	Class 'A' Tolerance as per IEC - 751
B	Class 'B' Tolerance as per IEC - 751

4

Code	Wire Configuration
2W	2 Wire System
3W	3 Wire System
4W	4 Wire System

5

Code	Sheath Diameter
3	3.0 mm
3/ 2.8	3.0/ 2.8 mm*
6	6.0 mm
6/ 5	6.0/ 5.0 mm*
8	8.0 mm
8/ 5	8.0/ 5.0 mm*

Consult factory for other diameter.
* RTD Element will be enclosed in
Ø3.0 mm SS 316 sheath & Extended by
Ø2.8 mm Mineral Insulated lead out cable.

6

Code	Weld Pad Radius
R	Specify in mm.
F	Flat Surface

13

Code	Weld Pad Material
S6	SS 316
S10	SS 310
S44	SS 446
INC6	Inconel 600

14

Code	Sheath Material
S6	SS 316

7

Code	Total Length "L"mm
	Specify in mm.

15

Code	Terminal Head Type
SWP	Screwed type, weatherproof, IP-65 in die-cast Aluminium
SFP	Screwed type, flamerproof Gr. IIA IIB in die-cast Aluminium
SEP	Screwed type, explosionproof Gr.IIC in die-cast Aluminium
HWP	Hinged type, weatherproof, IP-65 in die-cast Aluminium
JWP	Junction box, weatherproof, IP-65 in die-cast Aluminium
JFP	Junction box, flamerproof Gr. IIA IIB in die-cast Aluminium
JEP	Junction box, explosionproof Gr.IIC in die-cast Aluminium
BWP	Weatherproof Head, IP-65 in die-cast Aluminium with cover fitted with two screws.

8

Code	Option Description
0	None
3	Terminal head in SS 304
4	Terminal head in SS 316
5	Terminal head in Cast Iron
6	S.C. cable gland in nickel plated brass
7	D.C. cable gland in nickel plated brass
8	S.C. cable gland in SS 304
9	D.C. cable gland in SS 304
11	S.C. cable gland in SS 316
12	D.C. cable gland in SS 316
13	Head mounted temp. transmitter
14	S.S. base plate suitable for Temperature Transmitter mounting
20	Plug for conduit entry in Carbon Steel [ASTM A105]
21	Plug for conduit entry in SS 304
22	Plug for conduit entry in SS 316
23	Plug for conduit entry in Aluminium
PW	Five Point Factory Calibration Certificate
SX	SS Tag Plate

16

Code	No. Of Conduit Entry/Entries
1	One
2	Two
	Other, Please Specify

9

Code	Conduit Entry Size
A	3/4" ET(F)
B	1/2"NPT(F)
C	3/4"NPT(F)
	Other, Please Specify

10

Code	Mounting Type
S	Surface Mounting For JB
B	Bracket Mounting For Head
P	2"NB Pipe Mounting Bracket
L	Local Mounting Without Bracket

11

Code	Weld Pad Size
1	25x25x50 mm
2	25x25x100 mm
3	50x50x100 mm
	Other, Please Specify

12

Note :

- When selecting option "PW", please also specify measuring temperature range.(For e.g. 0/300°C)
- Explanations of Abbreviations used:
SC = Single Compression
DC = Double Compression
SS = Stainless Steel

(Ordering Example)

RTD9	S	(Pt-100)	DST	B	3W	6	S6	SWP	1	A	B	1	F	S6	3000	6
	1	2	3	4	5	6	7	8	9	10	11	12	13	14	15	16

Distributor



KB& TRADERS

79/1, APS Complex, Iduvampalayam Road,
Periyandipalayam Tiruppur-641687, India
Mobile: 90477 77573, Tel : 0421 4955647
Email: sales@kbandtraders.com.
Web: www.kbandtraders.com

