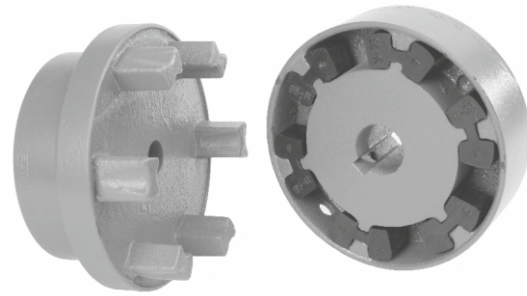
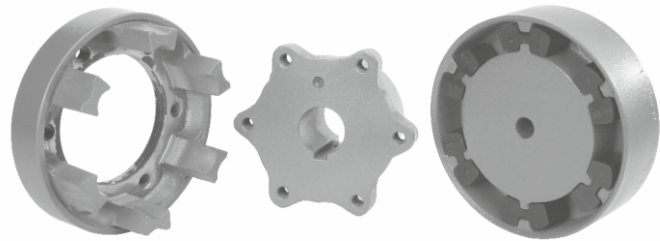


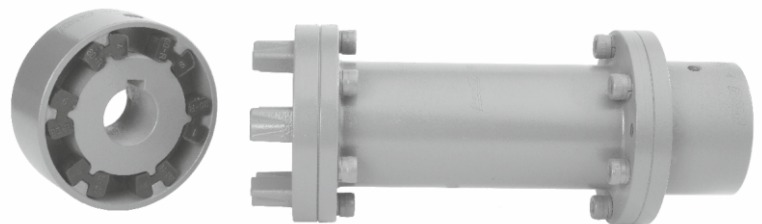
Rathi N-Flex couplings consists of graded cast iron hubs and a set of 'H' shaped highly resilient blocks which accommodates parallel, angular and axial misalignments & absorbs torsional vibrations. Rathi N-Flex spacer couplings (Type - RNS) are suitable for 'Back Pullout Pumps' in which the impeller can be disassembled without disturbing motor and pump from the base frame.



RN (B)



RN (A)



RNS(H)

## FEATURES

### **SIMPLICITY OF CONSTRUCTION**

Easy to assemble & disassemble. Suitable for reversing operation.

### **VARYING STIFFNESS CHARACTERISTICS**

Special H shaped inserts provide progressively increasing stiffness characteristics, hence ensure effective shocks & vibration absorption. Special elastomer can be supplied to suit specific application needs.

### **NO LUBRICATION**

RN/RNS couplings do not require lubrication of any kind.

### **SIMPLE / EASY MAINTENANCE**

No complicated mechanism to demand adjustment or maintenance. Inspection and replacement of inserts is easy.

### **LOW OPERATIONAL COST**

Only wear part is low cost inserts which make coupling economical in long run.

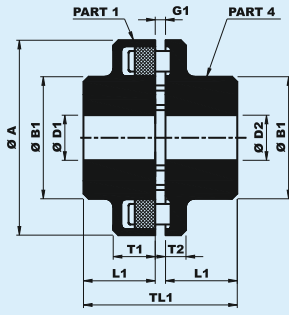
### **SMOOTH & QUIET OPERATION**

Reduces vibration & noise arising from severe torque fluctuations. Operating temp. is  $-30^{\circ}\text{C}$  to  $+100^{\circ}\text{C}$ .

### **Application :**

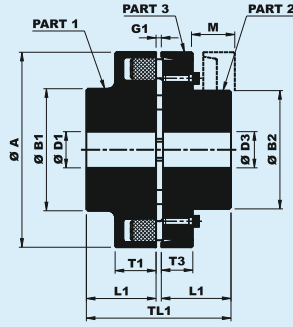
Mainly for pump applications such as :

**Water Pumps, Slurry Pumps, Sewage Pumps, Back Pull out Pumps, Multistage Pumps, Spilt Case Pumps, API Pumps, Chemical Process Pumps, Metering/Dosing Pumps, Gear Pumps, Paper Stock Pumps, Screw Pumps, Vacuum Pumps, Fire Pumps, High Pressure Pumps.**



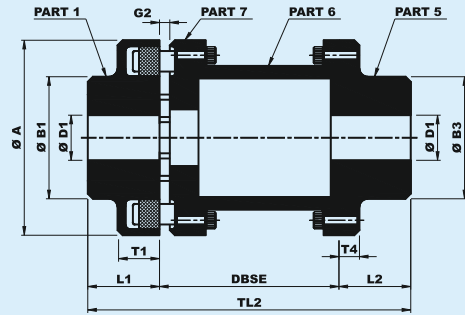
**RN(B)**

**SIZES - 68 TO 250**



**RN(A)**

**SIZES - 110 TO 250**



**RNS(H)**

**SIZES - 80 TO 250**

SIZE	RATED TORQUE Nm.	KW @ 100 RPM	RATED TORQUE Nm.	KW @ 100 RPM	RATED TORQUE Nm.	KW @ 100 RPM	MAX. SPEED (RPM)	MAX. BORE (mm)			DIMENSIONS (mm)													WEIGHT Kg			M.I. (WR <sup>2</sup> ) Kg-m <sup>2</sup>						
								D1	D2	D3	ØA	ØB1	ØB2	ØB3	ØB4	L1	L2	T1	T2	T3	T4	M	DBSE	RN(B)	RN(A)	RNS(H)	RN(B)	RN(A)	RNS(H)				
68 B	34	0.36	51	0.54	85	0.9	7000	24	28	-	68	68	45	-	-	20	-	21	8	-	-	-	-	-	-	-	0.54	-	-	0.0002	-	-	
80 B, H	60	0.63	90	0.95	150	1.6	6000	30*	38	-	80	68	68	-	55	30	45	31	10	-	7	-	100	140	140	1.3	-	2.6	2.7	0.0006	-	0.001	
95 B, H	100	1.1	150	1.65	250	2.8	5500	42	42	-	95	76	76	-	70	35	45	30	12	-	9	-	100	140	140	2.2	-	3.5	3.8	0.0013	-	0.003	
110 A, B, H	160	1.7	240	2.55	400	4.3	5300	48	48	38	110	86	86	62	85	40	50	34	14	20	11	33	100	140	180	3.3	3	5.2	5.4	0.0030	0.003	0.005	
125 A, B, H	240	2.5	360	3.75	600	6.3	5100	55	55	45	125	100	100	75	90	50	50	36	18	23	11	38	100	140	180	5.2	4.8	7.2	7.7	0.0060	0.005	0.010	
140 A, B, H	360	3.8	540	5.70	900	9.5	4900	60	60	50	140	100	100	82	100	55	65	34	20	28	15	43	100	140	180	5.6	6	10.0	10.5	0.0070	0.0080	0.018	
160 A, B, H	560	5.9	840	8.85	1400	14.8	4250	65	65	58	160	108	108	95	108	60	70	39	20	28	15	47	100	140	180	7.8	8.4	13.0	13.7	0.0100	0.0140	0.030	
180 A, B, H	880	9.2	1320	13.80	2200	23.0	3800	75	75	65	180	125	125	108	125	70	80	42	20	30	15	50	140	180	11.5	12	18.5	19.4	0.0200	0.025	0.054		
200 A, B, H	1340	14	2010	21.00	3350	35.0	3400	85	85	75	200	140	140	122	140	80	90	47	24	32	18	53	140	180	200	16	17	25.6	26.5	0.0400	0.040	0.095	
225 A, B, H	2000	21	3000	31.50	5000	52.5	3000	90	90	85	225	150	150	138	150	90	100	52	18	38	18	61	140	180	200	20	23	34.0	35.0	0.0700	0.080	0.158	
250 A, B, H	2800	29	4200	43.50	7000	72.5	2750	100	100	95	250	165	165	155	165	100	110	60	18	42	21	69	180	200	250	29	31	48.0	50.0	0.1200	0.130	0.270	
																																0.280	0.300

- All dimensions are in mm.
- \* = Bore 32 mm for part 5.
- G1 = 2-4mm for sizes 68 to 140, 2-6 mm for sizes 160 to 225 & 3-8 mm for size 250.
- G2 = 5 mm for sizes 80 to 140, 6 mm for sizes 160 to 225 & 8 mm for size 250.
- Part No. 5 is available with different length through Bores L2.
- Max. bore for coupling with or equivalent to DIN 6885 keys.
- For vertical installation contact RATHI.
- Weight & Inertia at Max Bore.

• In view of our constant endeavour to improve the quality of our products, we reserve the right to alter or change specifications without prior notice.  
 • This document is an intellectual property of Rathi Transpower Pvt Ltd and subject to copyright



**Rathi Transpower Pvt Ltd**  
 Gaia Apex, S. No. 33/2D, Viman Nagar  
 Pune 411 014, (INDIA)

Distributor



79/1, APS Complex, Iduvampalayam Road,  
 Periyandipalayam Tiruppur-641687, India  
 Mobile: 90477 77573, Tel : 0421 4955647  
 Email: sales@kbandtraders.com.  
 Web: www.kbandtraders.com