

Industrial Liquid Filled Pressure Gauge LG / LS

Applications :

Air Compressor, Hydraulic Presses, Power Packs, Pumps, Industrial Power Plants, Marine Engines, Pipelines and Transmission Stations, Machine building

Special Features :

- ★ Robust stainless steel housing
- ★ Fluid filling effectively dampens system pulsation or Vibration of instrument breakdown & Also making the gauge pointer easier to read.
- ★ Longer service life due to less wear and corrosion protection of the measuring system
- ★ No steaming up of the inside of the window In case of outdoor applications



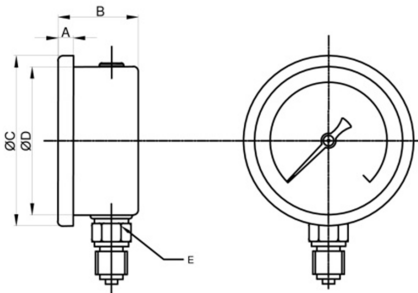
Specifications

Accuracy	NS 50,63 ±1.6% F.S , NS100-250±1% F.S
Dial Size	NS 50,63,100, 150,200,250 - Standard / Non Standard on request
Range in Kg/cm²	1, 1.6, 2.5, 4, 6,7,10,14, 16,17.5, 21,25,28, 40, 60 100,140, 160,200, 250,280,300, 400, 600,700, 1000,1400
Over Pressure Limit	130% of F.S.
Case & Bezel	IP-65) : SS 304 crimping for 50,63,100,150,SS 304 Snap Action Bayonet type /63,100,115,150,200,250 on request
Blow out Disc	NS 50 & 63 on Top & NS 100,150,200,250 on back side
Process Onnection	NS 50/63 -1/8" 1/4" BSP / NPT (M) NS100-250 - 1/4", 3/8", 1/2" BSP / NPT (M)
Sensing Elements	Bourdon Tube type : C form for Pressure ≤ 70 Kg/cm ² /bar , Helical wound for Pressure ≥70 Kg/cm ² /bar
Socket	Stainless steel 304, 316, 316L, Brass
Boundone Tube	Stainless steel 316, optional 316, Brass up to 40 Kg/cm ² /bar
Joints	TIG [Argon Arc] for S.S., Brazing for SS tube with Brass Socket,Soldering For Brass Internals
Case & Baynet Ring	Stainless steel 304 , optional 316

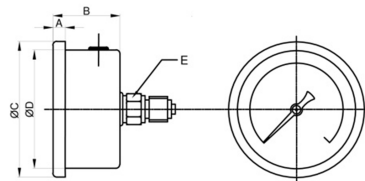
- Window** Acrylic glass, optional laminated safety glass
- Dial** Aluminium, black /Red markings on white background
- Pointer** Aluminum black - Fixed for 2" /21/2" crimping Bezel /Micro adjustment for Bayonet type bezel FOR 4"-10"
- Moement** SS 304/ Brass Nikkel Plated
- Ambient Temp** -25 C to 65 C
- Medium Temp** Max. 65 °C for Glycerine Filled & 150°C for Silicone oil Filled
- Storage Temp** -40 ... 50 °C
- Protection** IP-65
- Filling Liquid** Glycerine, Silicone Oil, or other on request
- Special Versions** Custom Printed dials to your exact specificaton, this can include non standard ranges (kPa, bar,kg/cm2, mPa,mbar, mmHg etc.) , coloured sections or lines o indicate specific pressures and even add your company logo in colour.

All Glycerine Filled Pr.Gauges Model start with suffix "LF" & Silicone Oil Filled Pr. Gauges Model start with suffix "LS" Follow IP data Sheet for more detail.

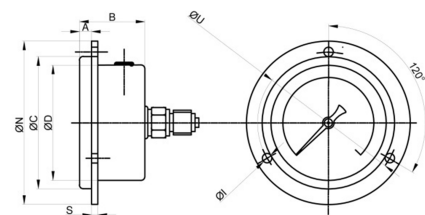
Dimension :



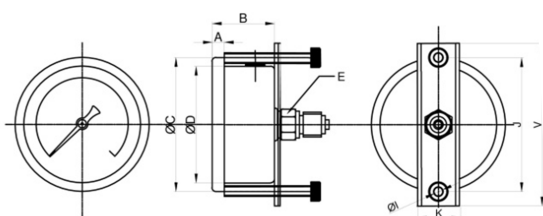
Crimping Bottom Direct					
NS	A	B	ØC	ØD	E
50	5	30	59	51.5	A/F 14
63	6.3	32	70	61	A/F 14



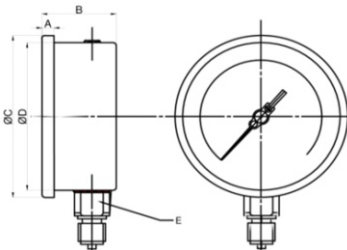
Crimping Back Direct					
NS	A	B	ØC	ØD	E
50	5	30	59	51.5	A/F 14
63	6.3	32	70	61	A/F 14



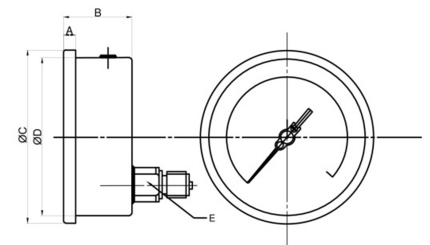
Crimping panel mounting									
NS	A	B	ØC	ØD	S	ØI	ØN	ØU	E
50	6.3	32	59	52	0.75	5	75	64.5	A/F 14
63	6.30	32	70	61	2.60	5	86.50	74.50	A/F 14



Crimping Bracket									
NS	A	B	ØC	ØD	E	ØI	J	K	V
63	6.3	32	70	61	A/F 14	5	70	22	85




Crimping Direct Mounting					
NS	A	B	ØC	ØD	E
100	7.5	46.50	109	98.5	22
150	10.00	48.50	160	149	22



Crimping Back Direct					
NS	A	B	ØC	ØD	E
100	7.5	46.5	109	98.5	22
150	10	48.50	160	149	22

For snap action case & Bezel refer IP datasheet

Distributor



KB&T
KB & TRADERS

79/1, APS Complex, Iduvampalayam Road,
Periyandipalayam Tiruppur-641687, India
Mobile: 90477 77573, Tel : 0421 4955647
Email: sales@kbandtraders.com.
Web: www.kbandtraders.com