

DIAPHRAGM SEAL FLANGE - "I" SECTION TYPE

DSFI

Applications :

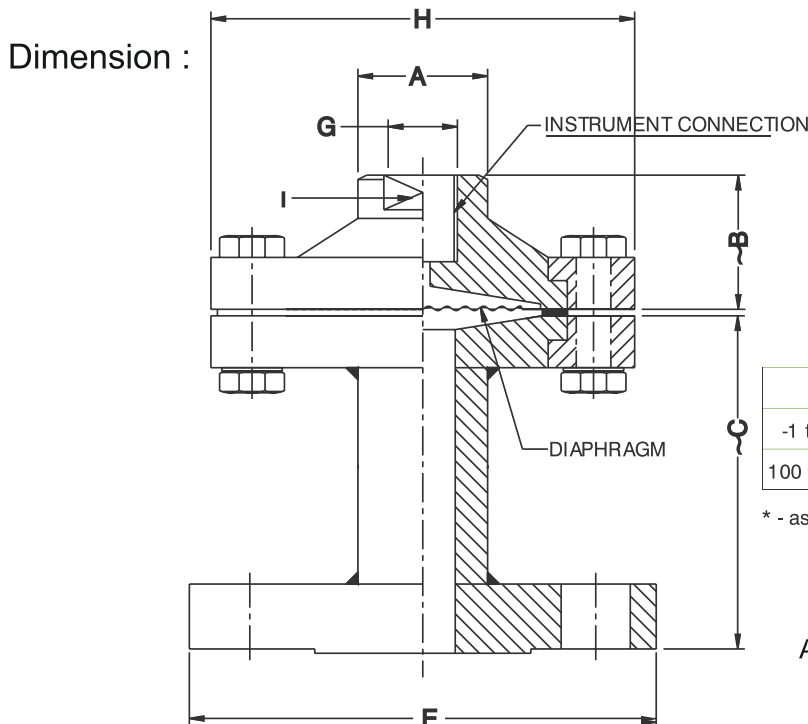
Diaphragm seals are provided in the instruments like pressure Gauges, switches, transmitters in order to isolate the sensing Element from the main service due to its corrosive, viscous and sedimented nature and To avoid clogging and solidification. This can be widely used with anti corrosive Treatment/protection & various flanged sizes.

Special Features :

- ★ Continuous Duty
- ★ Extension To Facilitate Smaller Flanged Connection
- ★ Ideal For General Purpose Application
- ★ Suitable For Anti Corrosive Protection
- ★ Std. version compatible with Delta model : IP
- ★ For Flange size 1" and below

Specifications

Range	-1 kg/cm ² to 400 kg/cm ²
Process temperature	- 20°C to 200°C for PTFE lined - 40°C to 345°C for without PTFE lined
Instrument Connection	3/8" BSP (F)
Process Connection	Flange (as per DIN/BS/ANSI/JIS) Finish 125 - 250 AARH
Fill Fluid	Silicon Oil - DC 200 upto -40 to 200°C
Diaphragm	AISI 316L SS
Top Chamber	AISI 304 SS
"I" Section (Bottom Chamber)	AISI 316 SS Flange (as per DIN/BS/ANSI/JIS)
Nuts / Bolts	Carbon Steel Nickel Plated
Gasket	PTFE (upto 200°C)/Metal Seal (upto 350°C)
Slip Ring	Steel chrome plated / black powder coated



Ranges	A	~ B	~ C	E	H	G	I
-1 to 60 kg/cm ²	30	31	75	*	98	3/8" BSP(F)	A/F 25
100 to 400 kg/cm ²	30	31	75	*	78	3/8" BSP(F)	A/F 25

* - as per standard flange table ANSI, DIN, BS, JIS Etc.,

All Dimensions are in mm, Drawings are not to scale

FLANG CONNECTION CODE:

AS PER DIN 2527

DN	PN	CODE
10	6	A01
	10	A02
	16	A03
	25	A04
	40	A05
	64	A06
	100	A07
	160	A08
	250	A09
	400	A10
15	6	A11
	10	A12
	16	A13
	25	A14
	40	A15
	64	A16
	100	A17
	160	A18
	250	A19
	400	A20
20	6	A21
	10	A22
	16	A23
	25	A24
	40	A25
25	6	A26
	10	A27
	16	A28
	25	A29
	40	A30
	64	A31
	100	A32
	160	A33
	250	A34
	400	A35

AS PER DIN 2633

DN	PN	CODE
10	16	A81
15		A82
20		A83
25		A84

AS PER DIN 2635

DN	PN	CODE
10	40	A99
15		B01
20		B02
25		B03

AS PER DIN 2642

DN	PN	CODE
10	10	A90
15		A91
20		A92
25		A93

AS PER ANSI B 16.5

NOMINAL SIZE	RATING /CLASS	CODE	NOMINAL SIZE	RATING /CLASS	CODE
1/2"	150	B09	1"	150	B21
	300	B10		300	B22
	600	B11		600	B23
	900	B12		900	B24
	1500	B13		1500	B25
	2500	B14		2500	B26
3/4"	150	B15			
	300	B16			
	600	B17			
	900	B18			
	1500	B19			
2500	B20				

AS PER JIS - B 2210

NOMINAL SIZE	RATING /CLASS	CODE	NOMINAL SIZE	RATING /CLASS	CODE
10A	5K	B57	25A	5K	B66
	10K	B58		10K	B67
	40K	B59		40K	B68
15A	5K	B60			
	10K	B61			
	40K	B62			
20A	5K	B63			
	10K	B64			
	40K	B65			

AS PER BS - 10

NOMINAL SIZE	TABLE	CODE	NOMINAL SIZE	TABLE	CODE
1/2"	D	B84	1"	D	B96
	E	B85		E	B97
	F	B86		F	B98
	H	B87		H	B99
	J	B88		J	C01
	K	B89		K	C02
3/4"	D	B90			
	E	B91			
	F	B92			
	H	B93			
	J	B94			
K	B95				

OPTIONS:

FOR NON STANDARD PRODUCTS/OPTIONAL ITEMS, PLEASE CONTACT FACTORY FOR DELIVERY AND MINIMUM QUANTITY OF ORDER

DSFI

TOP CHAMBER:

S6L AISI 316L SS
S4 AISI 304 SS

S6 AISI 316 SS
CS CARBON STEEL

CS

DIAPHRAGM:

KE PTFE
HC HASTELLOY 'C
ML MONEL

N1 NICKEL
CS CARBON STEEL
TL TANTALUM

TN TITANIUM
S6L AISI 316L SS

TL

GASKET:

VR METAL

VI PTFE

VI

DIAPHRAGM SEAL FLANGE - "I" SECTION TYPE

DSFI

TENSION FLANGE & NUT - BOLTS:

M3

S4 AISI 304 SS S6 AISI 316 SS M3 NICKEL PLATED MILD STEEL

FLUSHING RING:

VF

VG FLUSHING RING WITH 1/2"NPT PLUG (AISI 304 SS)

VD FLUSHING RING WITH 1/2"NPT PLUG (AISI 316 SS)

VE FLUSHING RING WITH 1/4"NPT PLUG (AISI 304 SS)

BOTTOM CHAMBER:

S6

S4 AISI 304 SS CS CARBON STEEL PV PVC S6 AISI 316 SS

S6L AISI 316L SS PB POLYPROPELENE PF PVDF

INSTRUMENT CONNECTION:

10B

15B 1/2" BSP(F) 06B 1/4" BSP(F) 06N 1/4" NPT (F)

15N 1/2" NPT (F) 10N 3/8" NPT(F) 10B 3/8 BSP (F)

PROCESS CONNECTION:

B11

AS PER DIN / BS / ANSI/ JIS(SELECT CODE FROM TABLE)

FILLING FLUIDS:

US FLUROLUBE 4.2 [-45 TO 175 °C / -49 TO 374° F]

UT FLUROLUBE 6.3 [-40 TO 235 °C / -40 TO 455° F]

UU FLUROLUBE FS5 [-40 TO 150°C / -40 TO 302°F]

UV FLUROLUBE FS5 [-40 TO 150°C / -40 TO 302°F]

UX SILICON DC 200-10CS [-40 TO 205°C / -40 TO 401F]

UY SILICON DC 704 [0 TO 315 °C / 32 TO 599° F]

UZ FLUROLUBE 6.3 [-40 TO 235 °C / -40 TO 455° F]

PROTECTION ON WETTED PARTS:

VS PTFE Lining On Bottom Chamber(I Section)- 2mm Thick

VZ PTFE Coating On Diaphragm

VV PTFE Protection For Diaphragm

TYPE:

A0 Without Capillary A1 With Capillary

CAPILLARY:

PE AISI 304 SS PG AISI 316 SS

CAPILLARY COVERED WITH ARMOUR:

PF AISI 304 SS PH AISI 316 SS PI PVC

CAPILLARY LENGTH(Max up to 6Mtrs.)

IN METERS (e.g. 1.5 = 1.5 METERS 2.0 = 2 METERS)

Ordering Example: DSFI B2 15B - S6L -VV- A0 - PH - 1.5mtr - US